




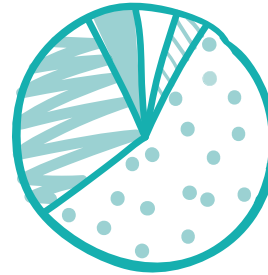





What we spent on providing our services to care for our patients and their loved ones

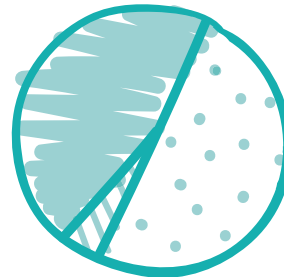
	In Patient Unit	£2,900,000
	Specialist Palliative Care Team	£1,030,000
	Day Hospice	£230,000
	Emotional Support Services	£245,000
	Therapies	£445,000



Total
£4,850,000

Cost of raising funds

	Events and activities	£460,000
	Shops	£590,000
	Investment costs	£25,000



Total
£1,075,000

Ways to donate

Online

You can make a donation online via the Donate page of our website, www.jerseyhospicecare.com

By Cheque

You can send us a cheque, made payable to Jersey Hospice Care, to : **Jersey Hospice Care, Mont Cochon, St Helier, JE2 3JB**

easyfundraising

Whenever you buy anything online, you could be raising a free donation for Jersey Hospice Care, through www.easyfundraising.co.uk. It's really simple and doesn't cost you anything.

To find out more about other ways you can support Jersey Hospice Care, please call our Income Generation team on **(01534) 510349** or email fundraising@jerseyhospicecare.com

For further information on our services, please call **(01534) 876555** or email administration@jerseyhospicecare.com

How can I make a difference

Jersey Hospice Care needs millions, so will my donation really make that much of a difference?

Yes!

Every single penny you donate makes a huge difference to the care we can provide.

With our daily running costs of £16,200, we are grateful for all donations – big or small. There are lots of ways you can help and some don't even cost you a penny.

If you are a Jersey tax payer, we can reclaim 25p for every £1 you donate to us if your donation is £50 or more. Please contact us by email or phone or see the website for more information.

£12 pays for a nutritious three-course meal for a Day Hospice patient

£30 pays for resources to support a child through bereavement

£20 pays for one hour's rehabilitative physiotherapy

£60 pays for one patient to attend our Day Hospice for a day

£12 pays for petrol for a week for a Specialist Palliative Care nurse to visit patients in the community

£120 pays for a day's worth of medical supplies on our In Patient Unit

£150 pays for a course of bereavement counselling, helping someone to come to terms with the death of a relative or friend

Hospice in numbers

£5.9 million

a year to provide
our hospice services

918 people

took part in our
Condor Ferries'
Dragon Boat Festival

392 volunteers

involved in all aspects
of our work

15,087

phone calls received into
our main Hospice number

50,000

hours provided by
volunteers

244 training

sessions delivered by
our Specialist Palliative
Care team

£1.3 million

was given away in
prizes with our Million
Pound Lottery

2,172 Christmas trees were
recycled, which raised

£32,000

Three

volunteer hairdressers

£420,000

saved through the
contribution of our
volunteers per year

53% of our
patients are
non-cancer

260 out of hours
weekend and bank
holiday visits to patients

449 deaths

We look after up to
15 patients
a day in our Day Hospice

3 volunteer
complementary
therapists

52 patients

a month on average
were supported by our
Lymphoedema nurse

£16,200

a day to provide our
services

1,000

visits to patients in
Jersey General Hospital

476 patients cared
for in the
community

12 days

is the average length of
stay in our In Patient Unit